



Steeda Ultra Light and Low Profile Chassis Jacking Rails S550 and S650 (2nd page)

Installation Instructions for Part:555-5205



Tools Needed

1. 15mm Socket Wrench

Installation

1. With the vehicle on the ground and the parking brake engaged you may begin the installation.
2. Remove the four factory 15mm bolts from the front of the chassis (2 on each side).

Note: It is common for factory cars to have less than four bolts. (Figure 1)

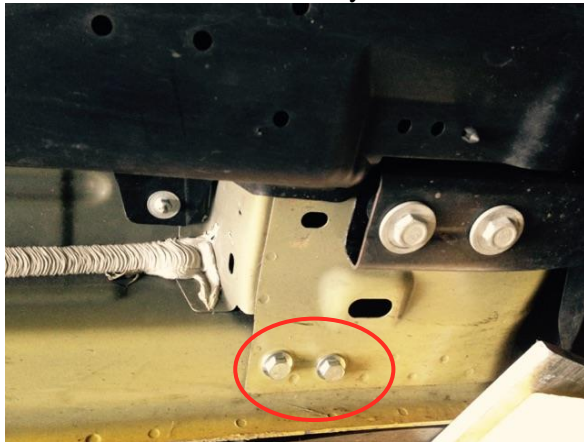


Figure 1



Figure 2: Passenger Side Jacking Rail

3. Align the Steeda chassis jacking rail so that the short bracket is facing the front of the vehicle and the inside lip of the bracket faces towards the center of the vehicle as shown in Figure 2. This is how you can identify the passenger side jacking rail from the driver side jacking rail. **Note:** Factory seam sealer may need to be removed in order for the rail to seat flush against the pinch weld.
4. Line up the mounting holes with the threaded chassis holes and using the supplied hardware firmly bolt the parts in place, 2 bolts in the front and 2 in the rear. A total of 4 per side. Torque to 45ftlbs.

Enjoy!

Note: Jacking rail powder coat is only design to withstand vehicle jacks with padded rubber jacking plates. Surface damage can be caused using other jacks available on the market.



Steeda S650 Ultra-Lite and Low-Profile Chassis Jacking Rails

Installation Instructions for Part #:555-5205



Tools Needed

1. 7mm Socket
2. 15mm Deep Well Socket
3. 13mm Deep Well Socket
4. Push pin removal plier & Sharp utility knife

Installation

1. Raise vehicle using either jack/jackstand or lift. The vehicle needs to be at height that allows easy access to vehicle splash shield.
2. Remove the factory splash shield using a 7mm socket. Remove the 9 screws, 3 push pins and 5 sheet metal nuts per side. See Figure 1.
3. Before panel removal, place Steeda jacking rail up to rocker panel. Using grease pencil or crayon mark splash panel for trimming. See Figure 2.
4. Trim panel using sharp utility knife into the shape. Remove the two front bolt using a 13mm socket and two rear bolt using 15mm socket. Reinstall the front two splash shield bolts to prevent any NVH with the jacking rails. See Figure 3.
5. Set the jacking rail into the place and start with Steeda provided fasteners and torque to 45 ft-lbs. and use the provided cap to cover the hole. See Figure 4.
6. Tight all the factory screws back to the undercarriage shield. Repeat the same process other side.

