

Steeda Full-Length, Ultra-Lite, and Low-Profile Chassis Jacking Rails

Installation Instructions for Part #:555-5212



Tools Needed

1. 3/8th Drive Ratchet
2. 15mm Deep Well Socket

Installation

1. With the vehicle on the ground and the parking brake engaged you may begin the installation.
2. Remove the four factory bolts from the front of the chassis (2 on each side).

Note: It is common for factory cars to have less than four bolts. (*Figure 1*)

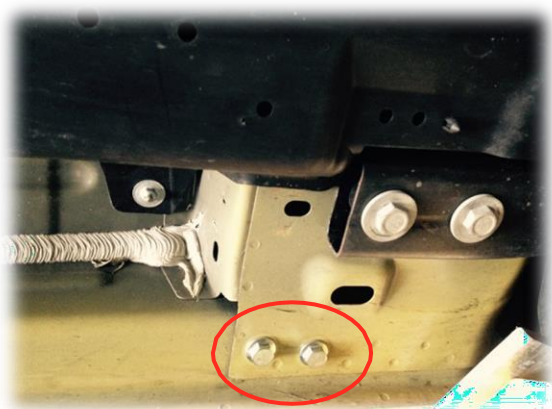


Figure 1: Factory bolts

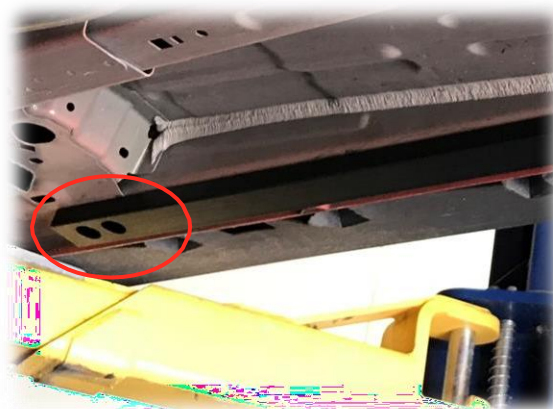


Figure 2: Steeda jacking rail installed

3. Align the Steeda jacking rail so that the 2 closer holes are facing the front of the vehicle as shown in Figure 2.

Note: The passenger side jacking rail is shorter than the driver side jacking rail in total length.

4. Line up the mounting holes with the threaded chassis holes.
Note: Some 2019 models come with an underbelly panel that needs to be modified.

5. Use the Steeda provided 2 longer bolts in front the rails in place, torque to 45ftlbs. Use the provided caps to cover the holes.

Notes:

- Jacking rail powder coat is only design to withstand vehicle jacks with padded rubber jacking plates. Surface damage can be caused using other jacks available on the market.

- Factory seam sealer may need to be removed in order for the rail to seat flush against the pinch weld.



Steeda S650 Full-Length, Ultra-Lite, and Low-Profile Chassis Jacking Rails

Installation Instructions for Part #:555-5212



Tools Needed

1. 7mm Socket
2. 15mm Deep Well Socket
3. 13mm Deep Well Socket
4. Push pin removal plier & Sharp utility knife

Installation

1. Raise vehicle using either jack/jackstand or lift. The vehicle needs to be at height that allows easy access to vehicle splash shield.
2. Remove the factory splash shield using a 7mm socket. Remove the 9 screws, 3 push pins and 5 sheet metal nuts per side. See Figure 1.
3. Before panel removal, place Steeda jacking rail up to rocker panel. Using grease pencil or crayon mark splash panel for trimming. See Figure 2 & 3.
4. Trim panel using sharp utility knife into the shape. Remove the two front bolt using a 13mm socket and two rear bolt using 15mm socket. Reinstall the front two splash shield bolts to prevent any NVH with the jacking rails. See Figure 4 & 5.
5. Set the jacking rail into the place and start with Steeda provided fasteners and torque to 45 ft-lbs. and use the provided cap to cover the hole and place the Steeda provided aluminum spacer on the rear side in between jacking rail and chassis. See Figure 6.
6. Tight all the factory screws back to the undercarriage shield. Repeat the same process other side.

