

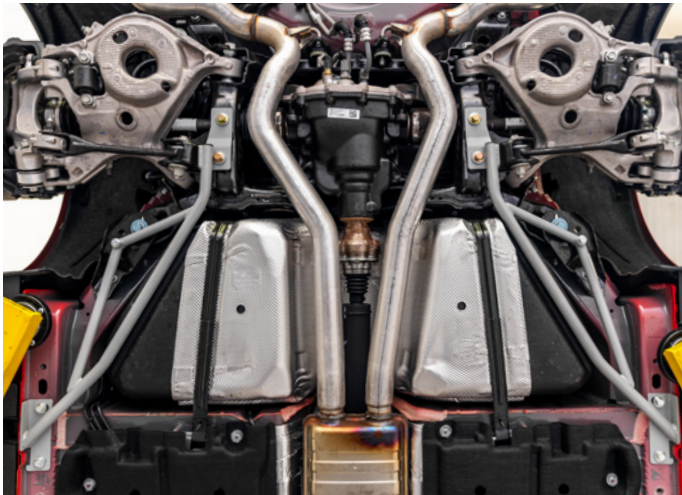


The world's #1 manufacturer for Ford
aftermarket parts since 1988.

Speed Matters

Steeda Mustang 'Stop the Hop' Street Starter Kit (2015-2026)

MPN: **555-4455**



Install Time: **3hr**

Alignment Required

Difficulty: Five blue Steeda logos arranged horizontally, indicating a difficulty level of 5 out of 5.

Parts List - 555-4455

Description	Quantity
DRIVER SIDE IRS BRACE	1
PASSENGER SIDE IRS BRACE	1
THREADED PLATE	2
SHORT HEX HEAD BOLT	2
MEDIUM HEX HEAD BOLT	4
LONG HEX HEAD BOLT	2
LONGEST HEX HEAD BOLT	2
SMALL WASHER	4
LARGE WASHER	4
THICK UPPER FRONT BUSHING SUPPORT	2
THIN UPPER REAR BUSHING SUPPORT	2
2 PIECE LOWER REAR BUSHING SUPPORT	2
1 PIECE LOWER FRONT BUSHING SUPPORT	2
SMALL ALLEN HEAD BOLT	4
FRONT ALIGNMENT DOWEL	2
REAR ALIGNMENT DOWEL	2

Tools List

- 13mm Socket
- 15mm Socket
- 16mm Socket
- 21mm Socket
- Socket Extension
- 5/32 Allen Wrench
- 18mm Wrench
- Torque Wrench
- Grease (Optional)

Installing the Bushing Supports & Alignment Dowels



Step 1

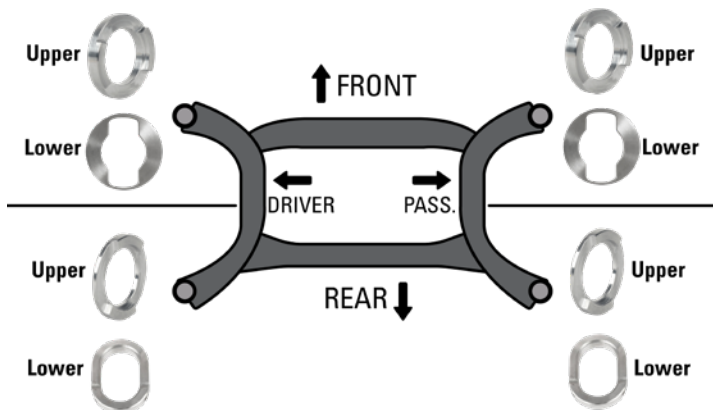
Towards the front of the rear subframe remove the two 13mm bolts and the 21mm bolt holding the subframe bracket in place. Remove the bolts completely.



Step 2

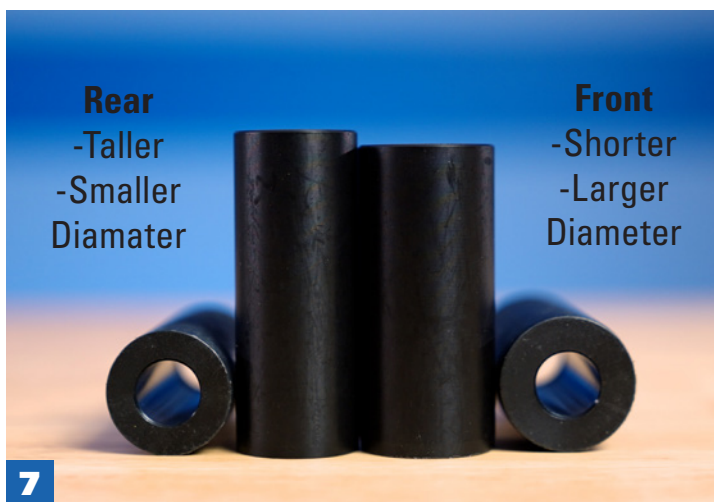
Towards the rear of the subframe, loosen, but do NOT remove the bolt completely. Only 1 sub-frame bolt should be removed at a time.

Installing the Bushing Supports & Alignment Dowels



Step 3

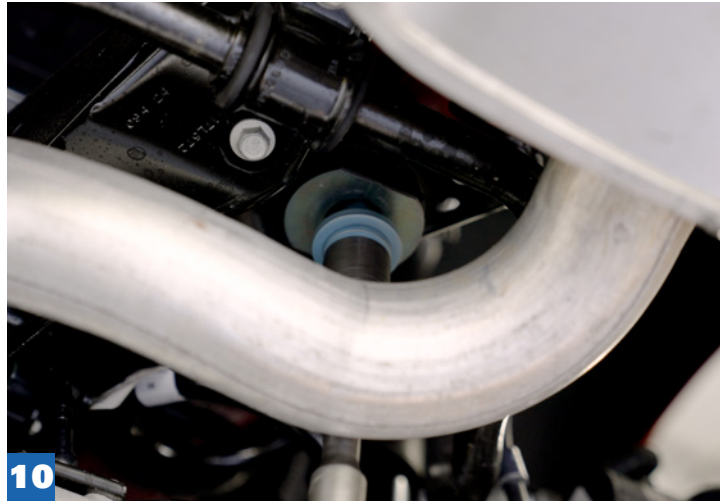
Place the bushing supports both top and bottom in the front of the subframe. Refer to figure 6 for the correct orientation. The thicker support will go up top.



Step 4

Before reinstalling the 21mm bolt, place the shorter Alignment dowel in the front of the subframe.

Installation of the Bushing Supports & Alignment Dowels



Step 5

Reinstall the front bracket & 21mm bolt where the threads are engaged, but not tightened down. This allows the subframe to hang slightly to allow for clearance in the rear. Remove the rear bolt completely.



Step 6

The two-piece bushing support will be installed in the lower rear section of the subframe. A bit of grease and some pliers will help get it into place. Then evenly tighten the two 5/32 allen bolts.

Installation of the Bushing Supports & Alignment Dowels



Step 7

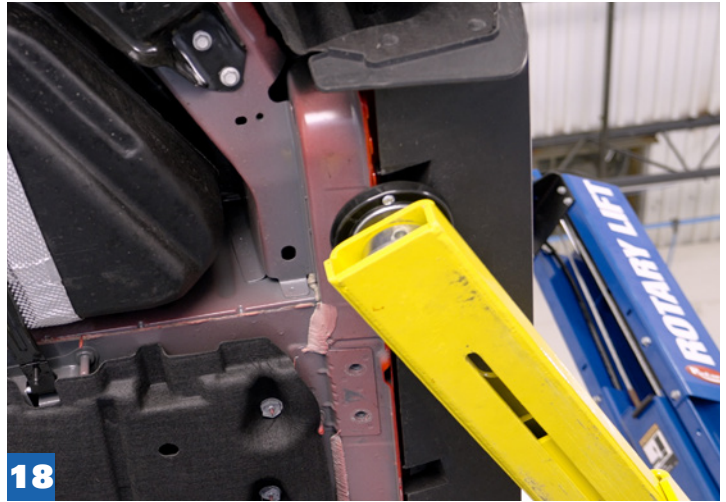
The thinner bushing support will be installed up top in the rear. The taller, thinner alignment dowel can be installed as well.



Step 8

Tighten the two subframe bolts and torque to 129ft/lbs. The smaller bolts on the front bracket will be torqued to 41ft/lbs. Repeat the installation on the driver's side.

Installation of the IRS Braces



Step 9

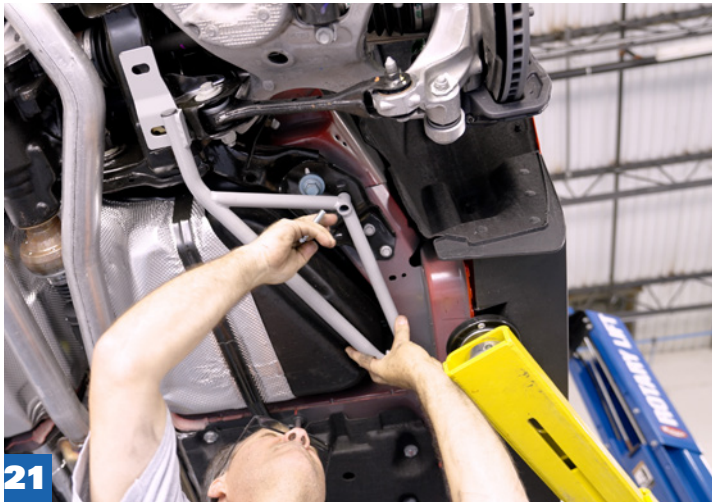
Remove the two bolts along the framerail.



Step 10

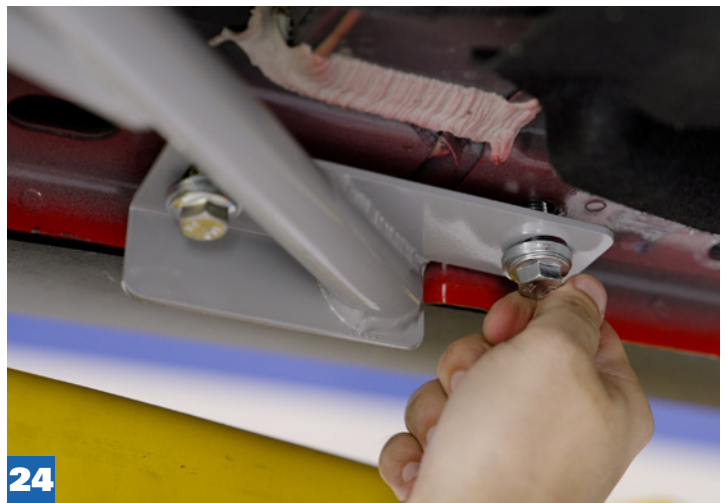
Insert the threaded plate into the subframe as shown in figure 19.

Installation of the IRS Braces



Step 11

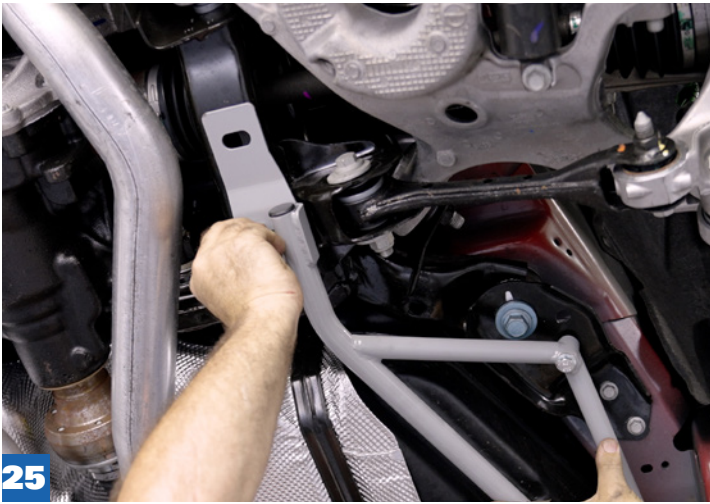
Place the IRS brace up in place and use the longer bolt to secure it to the front subframe bracket. Leave this bolt loose.



Step 12

Towards the front, install the two shorter bolts and large washers. Leave these bolts loose as well.

Installation of the IRS Braces



Step 13

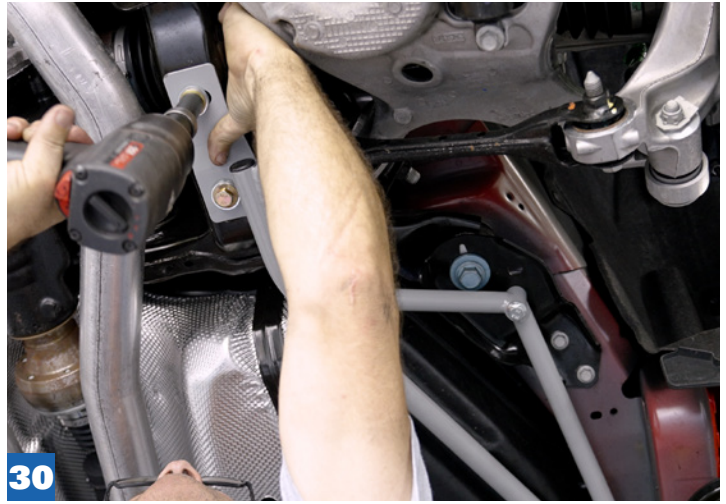
In the rear, install the smaller bolt & washer into the threaded plate you installed in step 10.



Step 14

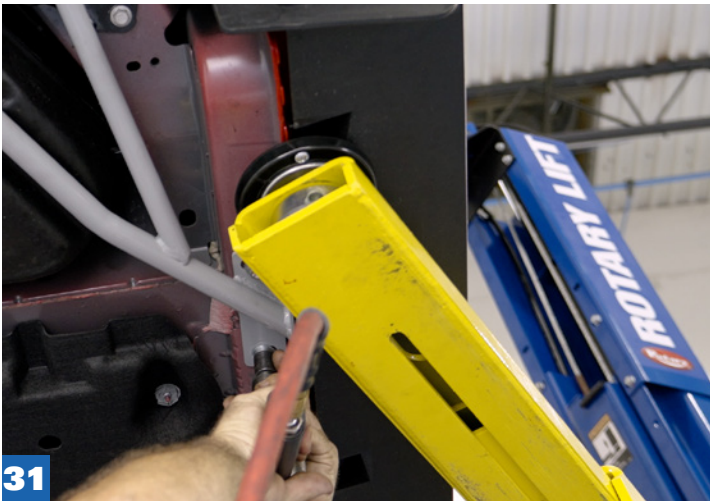
Place the nut on top of the subframe and the longer bolt & washer can be installed to secure it in place.

Installation of the IRS Braces



Step 15

Once all the bolts are started, tighten down the center first, then tighten the front and rear bolts.



Step 16

Torque the 2 rear bolts to 55ft-lbs. Torque the center and front two bolts to 45ft-lbs. Repeat this process for the driver's side.



2281 Hammondville Road 2019 Steeda Way
Pompano Beach, FL 33069 Valdosta, GA 31601

<https://www.steeda.com>