



2005-2014 S197 Mustang Rear Lower Control Arm Relocation Brackets 555-8119



Tools Needed:

1. 18mm socket
2. 21mm socket
3. Ratchet
4. Torque Wrench
5. Welder

It is **REQUIRED** that after the installation is done that the brackets are welded onto the rear axle. This cannot be stressed enough. You need to make sure your rear axle is square in the car before the brackets are completely welded. It is also recommended that you take measurements on the length of your wheelbase before you start this. You don't want it to change after the install of the brackets. Do not attempt to race or drive the car hard car unless the brackets are fully welded in place.

Installation of the Driver Rear Lower Control Arm Bracket:

1. Lift the car by the chassis on a vehicle lift or on jack stands to work on the rear suspension of the car.

NOTE: Use caution operating a lift or jack stands to ensure the car is stable and safe to work around and underneath.

2. On the driver's side, remove the rear lower control arm bolt at the axle end using an 18mm socket and ratchet.

NOTE: Work on one side of the vehicle at a time. It might be necessary to loosen the front bolt so you can rotate the control arm down.

3. Using an 18mm socket and ratchet, remove the panhard bar bolt on the back side of the bracket.

4. Install the driver's side relocation bracket.

5. Use the factory bolt and flag nut with the provided sleeve in place of the control arm at the factory hole position to hold it in place. DO NOT tighten.

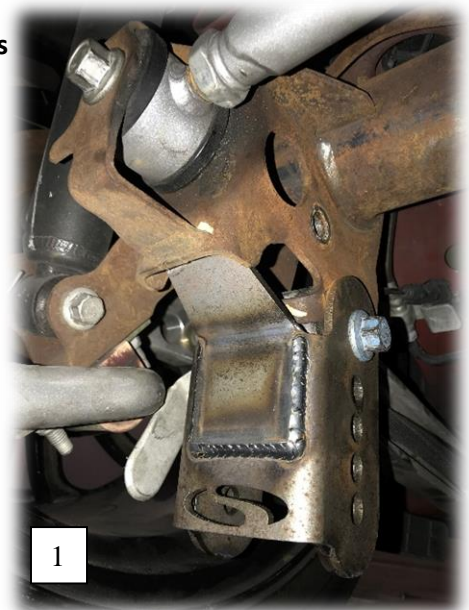


Figure 1: Driver's side relocation bracket installed

6. Thread the panhard bar bolt into the bracket. **DO NOT** tighten.
7. Using the provided long bolt, nut, and washers, attach the control arm to the center hole (2nd from the bottom).
NOTE: The lower the position the rear mount of the control arms, the higher and shorter your instant center will be. Raising it lowers your install center and makes it longer. Not recommended for factory control arms, if used you can only use the lowest mounting hole.
8. Torque all hardware on the driver's side to factory specs and move to the passenger side.

Installation of the Passenger Rear Lower Control Arm Bracket:

9. On the passenger's side, remove the rear lower control arm bolt at the axle end using an 18mm socket and ratchet.
NOTE: It might be necessary to loosen the front bolt so you can rotate the control arm down.
10. Install the passenger's side relocation bracket.
11. Use the factory bolt and flag nut with the provided sleeve in place of the control arm at the factory hole position to hold it in place. **DO NOT** tighten.
12. Install the provided short bolt, washer, and flag nut on the back side of the bracket. **DO NOT** tighten. See Figure 4.
13. Using the provided long bolt, washers, and nylok nut attach the control arm to the center hole (2nd from the bottom).
NOTE: The lower the position the rear mount of the control arms, the higher and shorter your instant center will be. Raising it lowers your install center and makes it longer. Not recommended for factory control arms, if used you can only use the lowest mounting hole.
14. Torque all hardware to factory specs.



Short bolt,
washer,
and flag nut

Figure 2: Passenger's side relocation bracket installed