



## Steeda CD4 Fusion Jacking Rails

Installation Instructions for Part #: 555-5211



1. Support the car on a lift or jack stands.
2. Feed the long end of the offset stud into the holes in the front of the chassis shown in Figure 1. **NOTE:** The offset stud need to grip both sides of the chassis evenly in to secure the brackets properly.
3. Feed the long end of the offset stud into the holes in the rear of the chassis shown in Figure 2. **NOTE:** The offset stud need to grip both sides of the chassis evenly in to secure the brackets properly.
4. Start with either the rear and guide the offset stud through the hole in the bracket as shown in Figure 3. Loosely tighten the nylock nut provided.
5. Repeat this process for the front bracket. See Figure 4.
6. Tighten both ends completely and ensure jacking rail is secure.
7. Repeat for the opposite side.

**NOTE:** Jacking rail powder coat is only designed to withstand vehicle jacks with padded rubber jacking plates. Surface damage can be caused using other jacks available on the market.



Figure 1: Front mounting hole for jacking rail



Figure 2: Rear mounting hole for jacking rail



Figure 3: Steeda Fusion Jacking Rail rear bracket

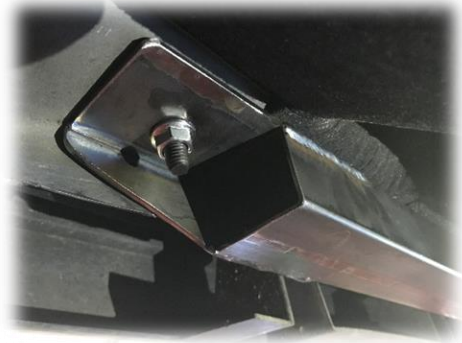


Figure 4: Steeda Fusion Jacking Rail front bracket  
Steeda CD4 Fusion Jacking Rails 555-5211