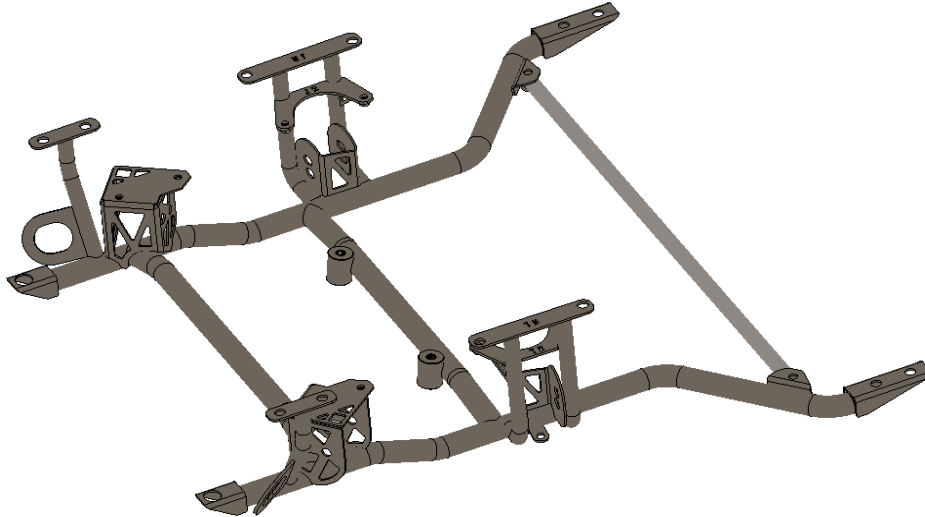




## Steeda S550 Mustang Road Race Front K-Member

Installation Instructions

Part #: 555-5061



**CAUTION:** Installing this k-member requires professional assistance. Please ensure safety is taken into consideration at every step when installing.

**NOTE:** This K-member is designed for off road competition use only and is not covered under any warranty stated or implied. Steeda Bump Steer kit is recommended. G-trac comes with spacers for long tube header clearance. Space as needed for proper clearance.

**Torque Specifications** (Recheck all values after each track day.) Loctite recommended.

Front Control Arms to Subframe (Inboard): 185 ft-lbs

K-Member to Chassis: 85 ft-lbs (Rear bolts and washers included)

Swaybar and Engine mounts: 55 ft-lbs

Steering Rack and G-trac bolts: 150 ft-lbs

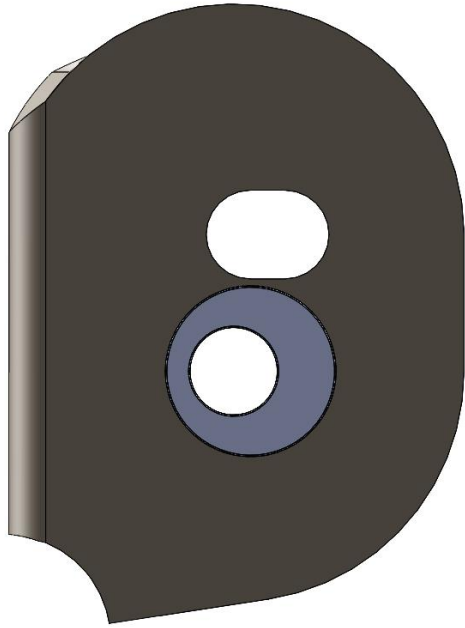
### **MagneRide sensor provisions**

MagneRide sensor provisions have been provided to allow for the system to operate fully.

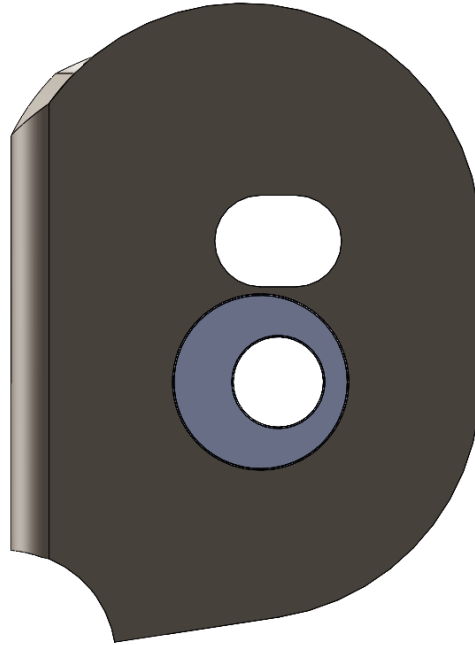
### **Lateral Link mounting locations**

Use the provided socket head bolts in the lateral link location in place of the factory bolt. The four mounting locations on the lateral link bracket are for roll center and track width adjustment. The lower-inboard mounting location is the same as the factory. If the vehicle has been lowered, the roll center has subsequently been lowered as well. In order to raise the roll center back up, we have provided higher mounting locations. Steeda also sells lateral links with extended ball studs (555-4906) if the vehicle requires further raising of the roll center. If the Steeda lateral link with extended ball studs are used, the track width will subsequently be reduced. The arms can then be mounted into the outboard location on the top or bottom of the lateral link bracket depending on vehicle configuration. Please see the images on the next page for reference.

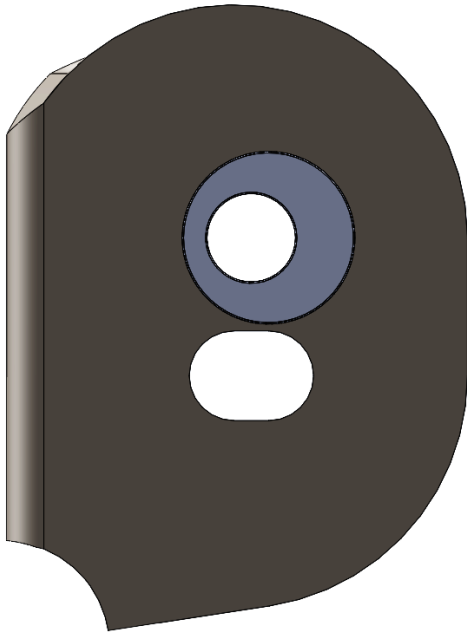
**LOWER INBOARD**  
Factory  
Use with stock lateral link



**LOWER OUTBOARD**  
Track Width increased  
Use with Steeda lateral link with extended ball stud



**UPPER INBOARD**  
Roll Center raised  
Use with stock lateral link



**UPPER OUTBOARD**  
Roll Center raised and Track Width increased  
Use with Steeda lateral link with extended ball stud

