

STEEDA COLD AIR INDUCTION KIT

2012 Mustang Boss 302

Instructions for part #555-3162

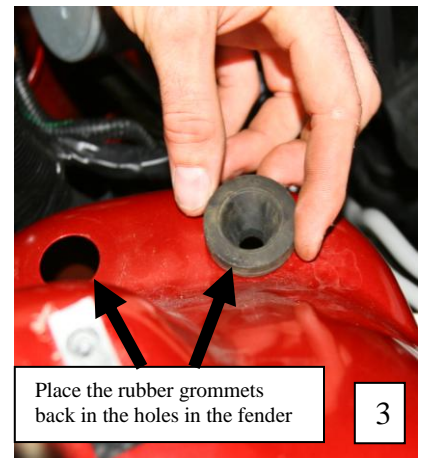
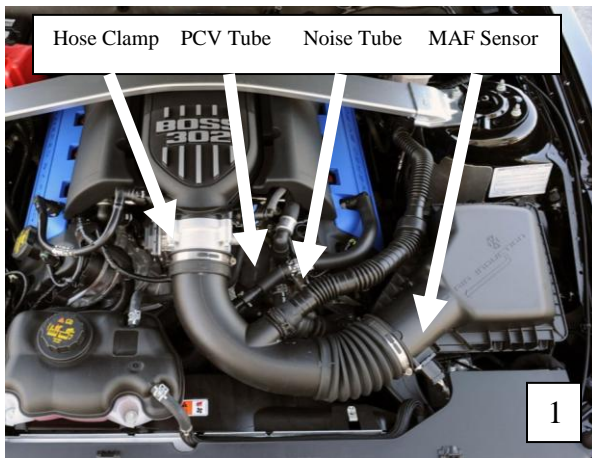


NOTE This kit is only to be used on cars that have been tuned. Using this kit without a tune can cause serious damage to your engine. Steeda will not be held liable for use without a Steeda tune.

NOTE

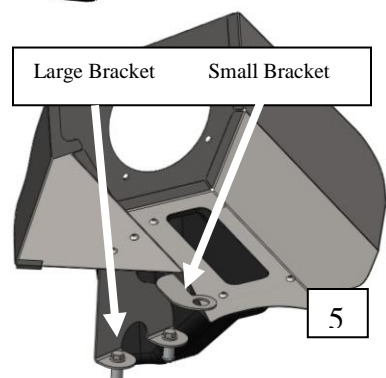
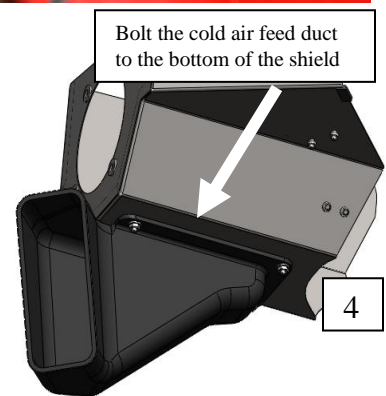
Removal of factory air intake system

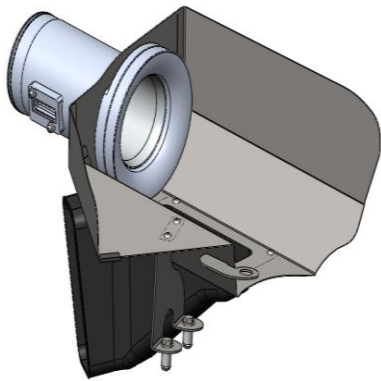
1. Remove the factory intake assembly by first loosening the hose clamp securing the intake tube to the throttle body. Also disconnect the hoses for the sound tube, and PCV system. These hoses are indicated in figure 1.
2. Disconnect the electrical connector for the mass air flow sensor and unclip the harness from the airbox. Unbolt the lower half of the airbox from the fender as seen in figure 2. There is a 10mm head screw to remove on the side of the airbox. Gently pull up on the airbox and dislodge the rubber grommets from their holes in the fender. Then pull the intake tube off of the throttle body and lift out the entire assembly in one piece.
3. Remove the rubber grommets from the studs on the bottom of the airbox. Insert the grommets into the holes where they were originally located in the inner fender as shown in figure 3.



Assembly of the Steeda Cold Air Kit

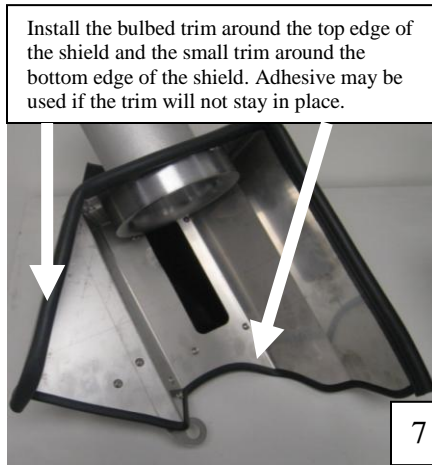
4. Remove the PVC liner from the shield.
5. Bolt the lower air duct to the shield with the provided #10 x 1/2" button head Allen bolts and associated lock nuts and washers as seen in figure 4. The bracket with the large hole in it must have the grommet, ferrule, and bolt used to secure the factory airbox transferred over.
6. Bolt the provided aluminum pins to the bottom of the larger bracket, as seen in figure 5, with the supplied 1/4" x 5/8" hex head bolts and 1/4" flat washers.
7. Attach the mass air flow sensor pipe to the shield assembly by passing the pipe through the hole in the shield. Orient it with the sensor mount underneath the tube as shown in figure 6. Secure it to the shield with the provided 1/4" x 3/8" button head Allen screws and 1/4" flat washers.
8. Install the rubber trim around the edges of the shield as shown in figure 7. The larger trim, with the bulb, is to be installed around the top of the shield to seal against the hood liner, while the smaller trim should go around the lower part of the shield.
9. Attach the supplied cone air filter to the velocity stack by sliding it over the outer flange and securing it with the attached hose clamp as seen in figure 8.
10. Remove the mass air flow sensor from the factory airbox lid by removing the two Torx screws securing it. Carefully transfer the sensor into the aluminum mass air flow sensor pipe in the same orientation as it was in the factory airbox lid. Use the two provided #8 x 5/16" button head Allen screws to secure it to the pipe.





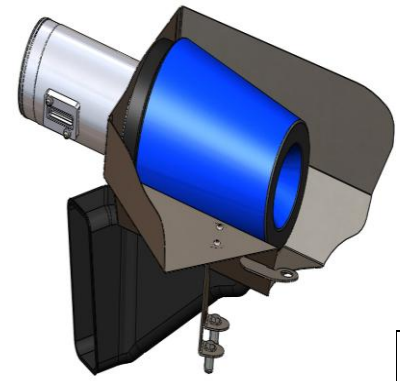
6

11. Now assemble and install the PCV hose adaptor onto the plastic intake tube. First, push half of the supplied rubber hose over the end of the smaller tube on the side of the Steeda intake tube. Then install the aluminum PCV hose adaptor into the end of the rubber hose and secure everything with two of the similar sized hose clamps. The barbed end of the adaptor tube goes into the rubber hose; the radiused end is for the PCV tube. The completed assembly should look similar to figure 9.



7

Install the bulbed trim around the top edge of the shield and the small trim around the bottom edge of the shield. Adhesive may be used if the trim will not stay in place.



8

Install the air filter over the flange of the velocity stack and secure it with the hose clamp on the filter

Installation of the Steeda Cold Air Induction Kit

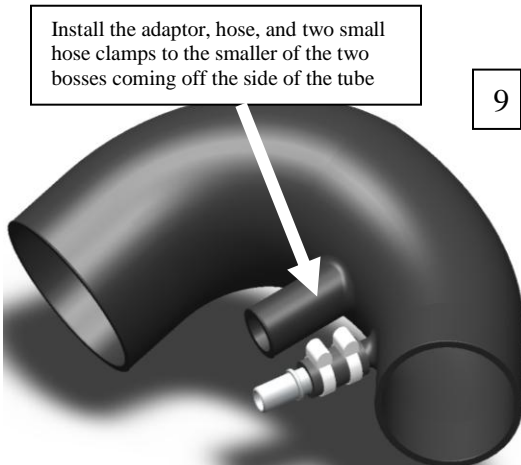
12. Fit the shield assembly into the car in the same location and orientation as the factory airbox as seen in figure 10. Be sure to locate the dowel pins, in the brackets of the shield, into the rubber grommets you placed in the fender earlier. Also reinstall and tighten the bolt used to secure the factory airbox into the bracket which you transferred the rubber grommet into.

NOTE: Make sure that the cold air feed duct on the shield assembly fits properly in the rubber grommet of the cold air feed duct coming from the grille.

13. Install the two silicone sleeves over the new intake tube and slide two hose clamps over each sleeve. The sleeves and hose clamps are different diameters to match the different diameters of the ends of the new intake tube. See figure 11.
 14. Fit the new intake tube in place by first setting the smaller diameter end and sleeve over the throttle body. Then install the larger end and sleeve over the mass air pipe. Be sure to have half of the sleeve over the intake tube and the other half over the attachment point. Tighten down all four hose clamps.
 15. Reinstall the noise tube and spring clamp over the largest boss on the side of the intake tube.

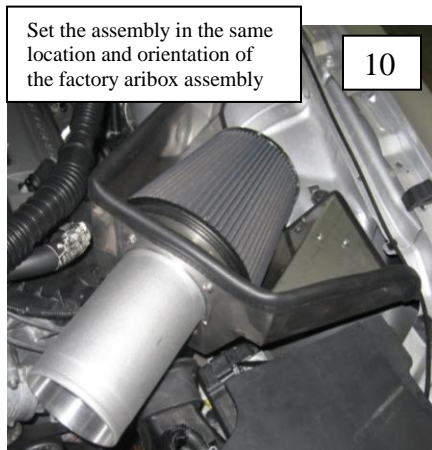
NOTE: If you do not want to re-use the factory noise tube assembly place the provided rubber plug and the spring clamp from the noise tube over the port on the intake tube.

16. Plug the PCV hose into the adaptor installed onto the intake hose. Be sure that the PCV hose on the car clips onto the adaptor.
 17. Reconnect the mass air flow sensor.
 18. You are done with the installation! The finished assembly should look similar to the figure next to the title.
 19. You now **MUST** tune the engine computer to be able to operate the car with the Cold Air Induction kit installed. If you do **NOT** have the engine tuned after installing the Cold Air Induction kit the air:fuel ratio could become very lean and could catastrophically damage the engine!! **Steeda will not be held responsible for damage caused by this cold air intake when used without the proper Steeda tune.**



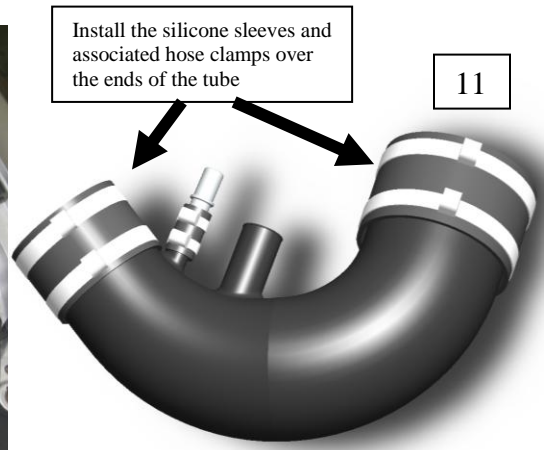
9

Install the adaptor, hose, and two small hose clamps to the smaller of the two bosses coming off the side of the tube



10

Set the assembly in the same location and orientation of the factory airbox assembly



11

Install the silicone sleeves and associated hose clamps over the ends of the tube

If any question or concerns please email GoFast@Steeda.com, or call us at 954-960-0774. Thank you for choosing Steeda!! We truly appreciate your business and commitment to U.S. manufactured products.

Warning: Not approved for sale in California or states that require a California E.O. #. This part has been designed and is intended for off-road application only. Installation of this part on a vehicle that is driven on public roads may violate U.S. and Canadian laws and regulations.

Note: Federal and several state and provincial laws prohibit the removal, modification or rendering inoperative of any part that affects emissions or safety on motor vehicles used on public streets or highways. Steeda Autosports assumes no liability for any violations arising out of any federal, state or provincial emissions or safety requirements on motor vehicles arising out of the customer's modifications and/or use of Steeda products. It is the responsibility of the customer to determine if their modified vehicle complies with applicable laws.

This limited warranty is the only express warranty applicable to Steeda Autosports products. Other rights may arise or vary from state to state in the United States. Steeda is not responsible for any time for which you may lose the use of your vehicle, any inconvenience you might be caused, the loss of your transportation or any part thereof, or any other incidental or consequential damages you may have.